



**Government of India
Ministry of Earth Sciences
India Meteorological Department**



Press Release

Date: 16th August, 2025

Time of Issue: 1345 hours IST

Subject: i) **Low Pressure area over South Chhattisgarh & neighbourhood. It is likely to move west-northwestwards, weaken gradually and reach Gujarat around 18th August morning as a remnant Cyclonic Circulation.**
ii) **Heavy to very heavy rainfall over Goa, Maharashtra (including Mumbai), Gujarat State during next 7 days with Extremely heavy falls over Konkan (including Mumbai) & Goa, Ghat area of Madhya Maharashtra during 16th -19th, Gujarat Region on 16th & during 18th-20th; Saurashtra on 19th & 20th August with peak activity on 16th and 19th & 20th August.**
iii) **Heavy to very heavy rainfall likely to continue over south peninsular India during next 4-5 days with Extremely heavy falls over Telangana on 16th & 17th; Coastal Karnataka on 18th & 19th, South Interior Karnataka on 18th August.**
iv) **A fresh low Pressure area is likely to form over northwest Bay of Bengal off Odisha coast around 18th August leading to increase in rainfall activity over eastern & central India.**

Realised weather during past 24 hours till 0830 hours IST of today, the 16th August, 2025:

- ❖ **Heavy to very heavy rainfall with extremely heavy falls (≥ 21 cm)** has been recorded at isolated places over Konkan (including Mumbai) and Telangana.
- ❖ **Very heavy rainfall (12-20 cm)** has been recorded at isolated places over Tamil Nadu, Kerala, Himachal Pradesh, Madhya Maharashtra, Madhya Pradesh, South Interior Karnataka, Marathwada.
- ❖ **Heavy rainfall (7-11 cm)** has been recorded at isolated places over Jammu, Uttarakhand, Rajasthan, south Haryana, Coastal Andhra Pradesh, Tripura, Gujarat Region, Chhattisgarh, Odisha and Coastal Karnataka.

For more details of realised weather, kindly refer [Annexure I](#).

i. Weather Systems, Forecast and Warnings (refer to [Annexure II & III](#)):

- ❖ The Monsoon trough runs south of its normal position.
- ❖ Yesterday's **low Pressure area** over south Odisha & adjoining north Andhra Pradesh lay over **south Chhattisgarh & neighbourhood** at 0830 hrs IST of today, the 16th August 2025. It is likely to move west-northwestwards and weaken gradually and reach Gujarat around 18th August morning as a remnant Cyclonic Circulation.
- ❖ An **upper air cyclonic circulation** lay over Jammu-Kashmir at lower tropospheric levels.
- ❖ An **upper air cyclonic circulation** lay over Northeast Arabian Sea & adjoining south Gujarat-Konkan-Goa at lower tropospheric levels.
- ❖ A **trough** runs from northeast Arabian sea to upper air cyclonic circulation associated with the low-pressure area over south Chhattisgarh at lower & middle tropospheric levels tilting southwards with height.
- ❖ A fresh **Low Pressure area** is likely to form over Northwest & adjoining westcentral Bay of Bengal around 18th August 2025 leading to increase in rainfall activity over eastern & central India.

Under the influence of these systems, the following weather is likely:

West India:

- ❖ **Extremely heavy rainfall** very likely at isolated places over Konkan & Goa; Ghat areas of Madhya Maharashtra during 16th -19th; Gujarat Region on 16th, during 18th-20th; Saurashtra on 19th & 20th August.
- ❖ Isolated to scattered **heavy to very heavy rainfall** likely over Madhya Maharashtra, Konkan (including Mumbai) & Goa, Gujarat State during next 7 days; Marathwada during 16th -19th August.
- ❖ Strong surface winds (speed reaching 40-50 kmph) very likely over the region till 20th August.

- ❖ Light to moderate rainfall at most/many places very likely over the region during next 7 days.

South Peninsular India:

- ❖ **Extremely heavy rainfall** very likely at isolated places over Telangana on 16th & 17th; Coastal Karnataka on 18th & 19th; South Interior Karnataka on 18th August.
- ❖ Isolated **heavy rainfall** likely over Coastal Karnataka & Telangana during the next 7 days; Tamil Nadu on 16th & 17th; Interior Karnataka during 16th-19th; Rayalaseema on 16th; Kerala & Mahe during 16th-20th August with isolated **very heavy rainfall over Tamil Nadu on 16th; Telangana on 18th & 19th; Coastal Andhra Pradesh & Yanam, Kerala during 16th-19th; Coastal & South Interior Karnataka on 16th & 17th August.**
- ❖ Strong surface winds (speed reaching 40-50 kmph) very likely over South Peninsular India till 19th August.
- ❖ Light to moderate rainfall at most/many places accompanied with thunderstorm & lightning likely over Rayalaseema, Tamil Nadu, Coastal Andhra Pradesh & Yanam and Telangana during next 5 days.

East & Central India:

- ❖ **Extremely heavy rainfall** very likely at isolated places over south Vidarbha on 16th and West Madhya Pradesh on 18th August.
- ❖ Isolated **heavy rainfall** likely over Madhya Pradesh & Chhattisgarh during next 7 days; Vidarbha, Odisha during 16th-19th; Andaman & Nicobar Islands on 16th & 17th; Sub-Himalayan West Bengal & Sikkim on 17th, 21st & 22nd; Bihar during 20th-22nd; Jharkhand on 19th, 21st & 22nd August **with isolated very heavy rainfall over West Madhya Pradesh on 16th, 17th, 21st & 22nd; East Madhya Pradesh on 21st & 22nd; Vidarbha on 17th; Odisha, south Chhattisgarh on 18th & 19th August.**
- ❖ Light to moderate rainfall at most/many places accompanied with thunderstorm & lightning likely over the region during next 5 days.

Northwest India:

- ❖ Isolated **heavy rainfall** likely over East Rajasthan & Uttarakhand during next 7 days; Himachal Pradesh during 16th-20th, Jammu-Kashmir 18th & 19th; Punjab during 16th-19th; Haryana during 16th-18th; West Uttar Pradesh on 16th & 22nd, East Uttar Pradesh on 21st & 22nd; West Rajasthan during 19th-22nd August **with very heavy rainfall over Uttarakhand on 16th & 17th; East Rajasthan on 19th, 21st & 22nd August.**
- ❖ Light/moderate rainfall at most/many places accompanied with thunderstorm & lightning likely over Jammu-Kashmir-Ladakh-Gilgit-Baltistan-Muzaffarabad, Uttarakhand & Rajasthan during next 7 days.

Northeast India:

- ❖ Isolated **heavy rainfall** likely to continue over Assam & Meghalaya, Nagaland, Manipur, Mizoram & Tripura during next 7 days; Arunachal Pradesh on 16th, during 19th-22nd August **with very heavy rainfall over Arunachal Pradesh on 16th, during 19th-21st; Nagaland, Manipur, Mizoram & Tripura, Assam & Meghalaya during 20th-22nd August.**
- ❖ Light/moderate rainfall at many places accompanied with thunderstorm & lightning likely during next 3 days.

Fishermen warning:

Fishermen are advised not to venture into the following from 16th August to 21st August 2025 to the following Areas:

Arabian Sea:

Most parts of westcentral Arabian Sea and adjoining areas of eastcentral & southwest Arabian Sea along and off Gujarat coast and along and off the Somalia, Yemen & Oman coasts and adjoining sea areas during 16th to 21st August; over Comorin area during 16th to 20th August; Lakshadweep area; along and off Konkan, Goa, Karnataka- Kerala coasts during 16th to 19th August.

Bay of Bengal:

Along and off Sri Lanka coast; over most parts of central, south Bay of Bengal; some parts of northwest Bay of Bengal during 16th to 21st August; along and off Andhra Pradesh & Odisha coasts on 16th August and during 18th to 21st August; over Gulf of Mannar, Andaman Sea during 16th to 20th August and along & off south Tamil Nadu coast on 16th & 17th and entire Tamil Nadu coast during 18th to 20th August.

ii. Weather conditions and forecast over Delhi/NCR during 16th to 19th August, 2025 (Annexure IV)

For more details, kindly refer National Weather Bulletin:

https://mausam.imd.gov.in/responsive/all_india_forecast_bulletin.php

For District wise warnings refer: <https://mausam.imd.gov.in/responsive/districtWiseWarningGIS.php>

For Fishermen warning refer <https://rsmcnewdelhi.imd.gov.in/fishermen-warning.php>

Rainfall recorded (in cm) during past 24 hours till 0830 hours IST of today, the 16th August:

Konkan & Goa: Santacruz (dist Mumbai Suburban) 24; Savarde-arg (dist Ratnagiri) 23; Chiplun (dist Ratnagiri) 22; Kudal (dist Sindhudurg) 18; Mandangad (dist Ratnagiri), Mhasla (dist Raigad), Palghar ARG (dist Palghar) 16 Each; Dapoli ARG (dist Ratnagiri) 15; Panvel ARG (dist Raigad), Guhagarh (dist Ratnagiri) 14 Each; Shriwardhan (dist Raigad), Poladpur (dist Raigad) 13 Each; Tbia IMD Part Time (dist Thane), Wakwali ARG (dist Ratnagiri) 12 Each; Vaibhavwadi (dist Sindhudurg), Vasai (dist Palghar) 11 Each; Malvan (dist Sindhudurg), Mulde ARG (dist Sindhudurg) 10 Each; Matheran (dist Raigad), Colaba (dist Mumbai City), Awalegaon - ARG (dist Sindhudurg), Mahad (dist Raigad), Uran (dist Raigad), Sangameshwar Devrukh (dist Ratnagiri) 8 Each; Harnai IMD (dist Ratnagiri), Karjat ARG (dist Raigad), Sawantwadi (dist Sindhudurg), Khalapur (dist Raigad) 7 Each;

Telangana: Govindaraopet (dist Mulugu) 22, Kotapalle (dist Mancherial) 16, Sarangapur (dist Jagtial) 12, Nallabelly (dist Warangal) 11, Venkatapuram (dist Mulugu) 11, Vemanapalle (dist Mancherial) 11, Mulug (dist Mulugu) 11, Narsapur (dist Medak) 11, Mutharam Mahadevpur (dist J. Bhupalpally) 11, Venkatapur (dist Mulugu) 10, Ars_basanthpur(a) (dist Medak) 10,

Madhya Maharashtra: Dahigaon - Fmo (dist Jalgaon) 20; Mahabaleshwar (dist Satara) 14; Gaganbawada (dist Kolhapur), Lonavala ARG (dist Pune) 13 Each; Radhanagari (dist Kolhapur) 12; Nandgaon (dist Nashik) 10; Erandol (dist Jalgaon), Dharangaon (dist Jalgaon) 9 Each; Pachora (dist Jalgaon), Girnadam - Fmo (dist Nashik) 7 Each;

Himachal Pradesh: Naina Davi (dist Bilaspur) 16; Palampur (dist Kangra) 10; Pandoh (dist Mandi) 7;

Tamil Nadu: Chinnakalar (dist Coimbatore) 16; Valparai PTO (dist Coimbatore) 14; Upasi Tea Research AWS (dist Coimbatore), Sholayar (dist Coimbatore), Cincona (dist Coimbatore) 12 Each; Valparai Taluk Office (dist Coimbatore), Avalanche (dist Nilgiris), Valparai Pap (dist Coimbatore) 10 Each

Kerala: Vellanikkara (dist Thrissur) 15; Peechi AWS (dist Thrissur) 13; Lower Sholayar AWS (dist Thrissur) 12; Peermade To (dist Idukki), Ayyankunnu AWS (dist Cannur) 11 Each; Munnar Kseb (dist Idukki), Kunnamkulam (dist Thrissur), Vilangankunnu ARG (dist Thrissur), Mangalam Dam AWS (dist Palakkad) 10 Each; Angadipuram (dist Malappuram), Idamalayar Dam AWS (dist Ernakulam) 9 Each;

South Interior Karnataka: Agumbe AWS (dist Shivamogga) 14; Kammardi (dist Chikkamagaluru) 10; Sringeri HMS (dist Chikkamagaluru) 9; Koppa (dist Chikkamagaluru), Bhagamandala (dist Kodagu) 7 Each;

West Madhya Pradesh: Sailana (dist Ratlam) 14; Khachrod (dist Ujjain) 12; Sendhwa(med) (dist Barwani), Manawar (dist Dhar) 9 Each; Bhanpura (dist Mandsaur), Warla (dist Barwani) 8 Each; Badwani (dist Barwani), Depalpur (dist Indore), Chachariyapati (dist Barwani), Pachore (dist Rajgarh) 7 Each;

Vidarbha: Sironcha (dist Gadchiroli) 12; Ahiri (dist Gadchiroli) 9;

East Madhya Pradesh: Pandhurna (dist Chhindwara) 12; Lakhnadon (dist Seoni) 8;

Tripura: Gokulpur AWS (dist Gomati) 11; Chhamonu (dist Dhalai), Kvk Dhalai (dist Dhalai) 9 Each; Kolasib AWS (dist Kolasib) 8; Ashapara AWS (dist North Tripura) 7;

Uttarakhand: Rishikesh (dist Dehradun) 11; Loharkhet (dist Bageshwar) 9; Sama (dist Bageshwar), Narendranagar (dist Garhwal Tehri) 7 Each;

Chhattisgarh: Chhotedongar (dist Narayanpur) 11; Darbha (dist Bastar), Pondi Bachra (dist Koriya) 8 Each; Sukma (dist Sukma), Barsur (dist Dantewada) 7 Each;

Marathwada: Kandhar (dist Nanded) 11; Kinwat (dist Nanded) 10; Himayatnagar (dist Nanded) 8;

Coastal Karnataka: Gersoppa (dist Uttara Kannada) 10; Siddapura (dist Udupi) 8; Dharmasthala (dist Dakshina Kannada) 7;

Jammu-Kashmir: Udampur(IAF) (dist Udampur) 10;

Odisha: Bari (dist Jajpur), Binjharpur (dist Jajpur) 8 Each; Kotpad (dist Koraput) 7;

Saurashtra & Kutch: Thangadh (dist Surendranagar) 8;

Haryana Mewat Nuh AWS (dist Nuh) 8;

Gujarat Region: Kapadvanj (dist Kheda) 7;

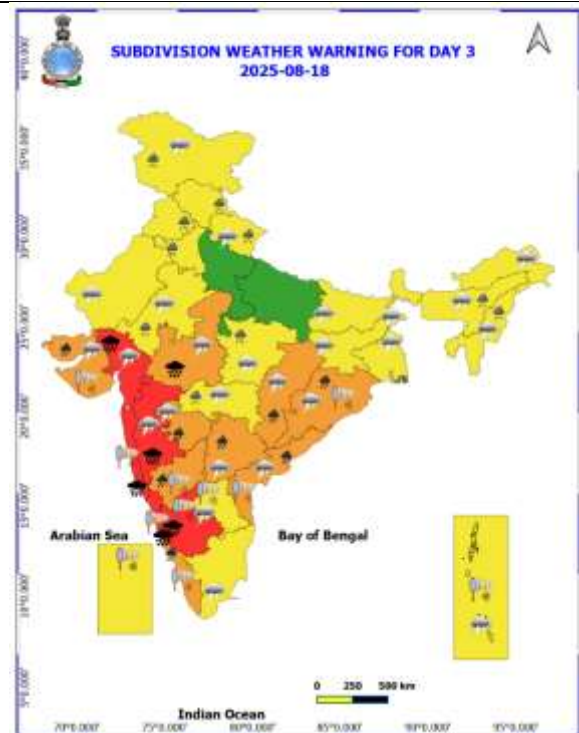
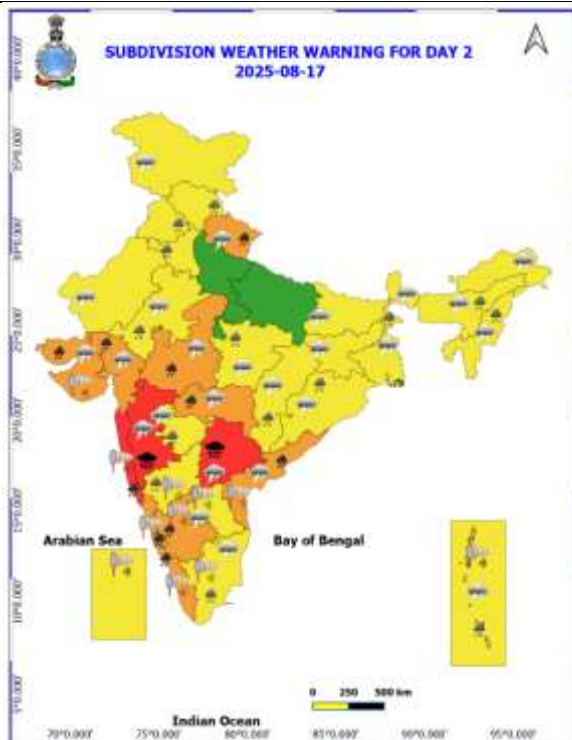
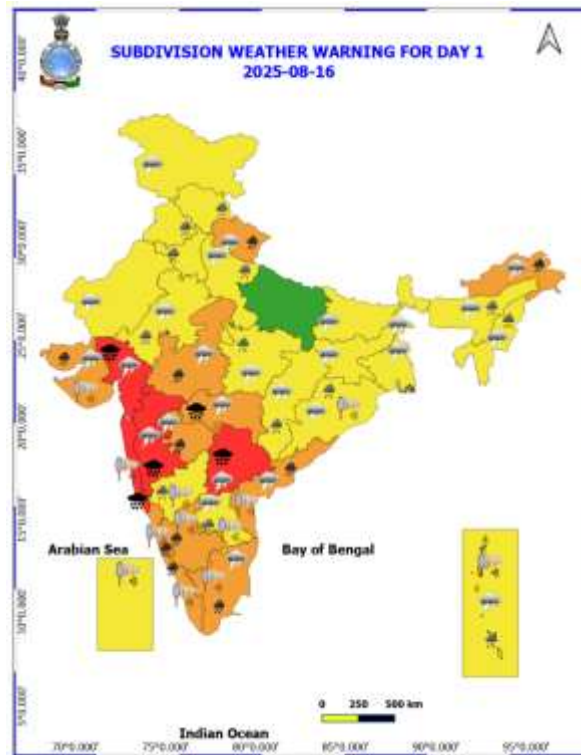
East Rajasthan: Gogunda SR (dist Udaipur) 7;

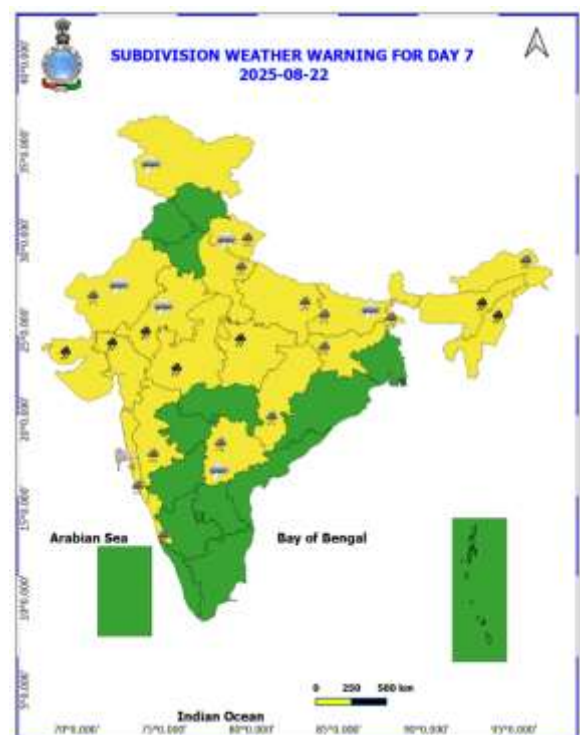
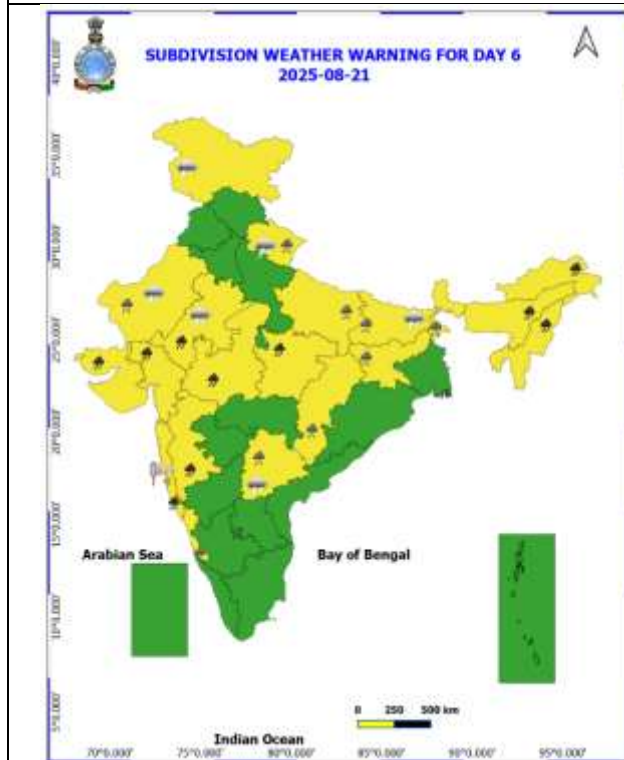
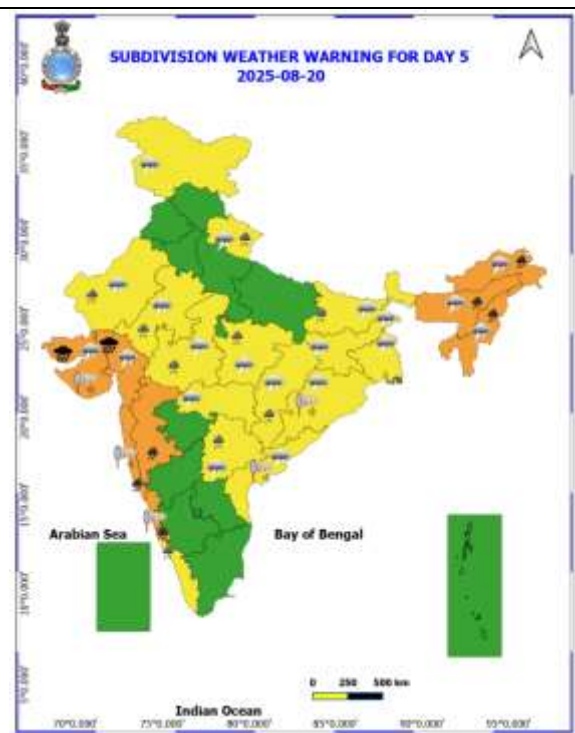
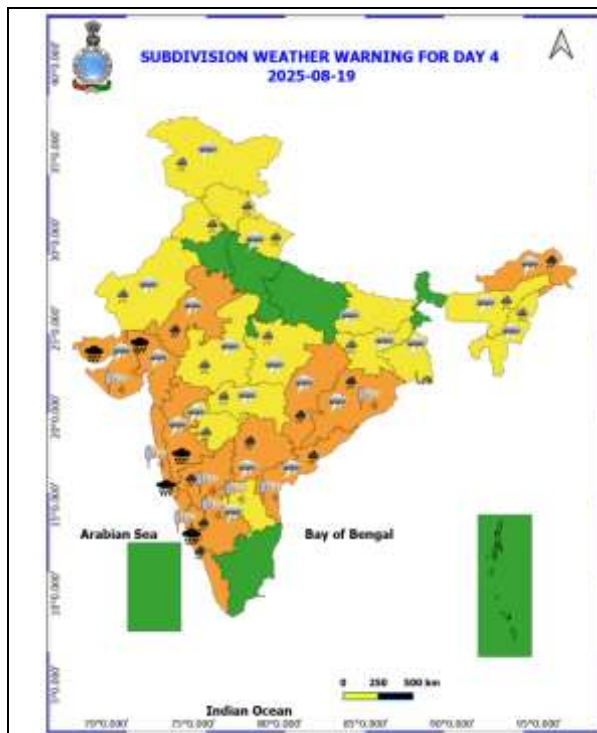
West Rajasthan: Bali (dist Pali) 7;

Coastal Andhra Pradesh: Kukunoor (dist Eluru) 7.

Table-1								
7 Days Rainfall Forecast								
S.No.	Subdivision	16- Aug	17- Aug	18- Aug	19- Aug	20- Aug	21- Aug	22- Aug
		Day 1	Day 2	Day 3	Day 4	Day 5	Day 6	Day 7
1	ANDAMAN & NICOBAR ISLANDS	WS	WS	WS	FWS	FWS	FWS	FWS
2	ARUNACHAL PRADESH	SCT	SCT	SCT	SCT	FWS	FWS	FWS
3	ASSAM & MEHGHALAYA	FWS	FWS	FWS	FWS	WS	WS	WS
4	NAGALAND, MANIPUR, MIZORAM AND TRIPURA	FWS	FWS	SCT	SCT	WS	FWS	FWS
5	SUB HIMALAYAN WEST BENGAL & SIKKIM	SCT	WS	FWS	SCT	FWS	WS	WS
6	GANGETIC WEST BENGAL	SCT	FWS	FWS	FWS	FWS	WS	WS
7	ODISHA	SCT	FWS	WS	WS	FWS	FWS	FWS
8	JHARKHAND	SCT	FWS	FWS	FWS	FWS	FWS	WS
9	BIHAR	ISOL	SCT	SCT	SCT	FWS	FWS	WS
10	EAST UTTAR PRADESH	ISOL	SCT	SCT	SCT	FWS	FWS	FWS
11	WEST UTTAR PRADESH	SCT	SCT	SCT	FWS	FWS	FWS	FWS
12	UTTARAKHAND	WS	WS	FWS	FWS	FWS	FWS	FWS
13	HARYANA, CHANDIGARH & DELHI	FWS	FWS	FWS	SCT	FWS	SCT	SCT
14	PUNJAB	SCT	SCT	FWS	SCT	SCT	SCT	SCT
15	HIMACHAL PRADESH	FWS	FWS	WS	FWS	SCT	SCT	FWS
16	JAMMU AND KASHMIR AND LADAKH	SCT	FWS	WS	WS	ISOL	ISOL	FWS
17	WEST RAJASTHAN	ISOL	ISOL	ISOL	SCT	SCT	SCT	SCT
18	EAST RAJASTHAN	SCT	FWS	FWS	FWS	FWS	FWS	FWS
19	WEST MADHYA PRADESH	FWS	WS	WS	WS	WS	WS	WS
20	EAST MADHYA PRADESH	FWS	FWS	FWS	FWS	WS	WS	WS
21	GUJRAT REGION	WS	WS	WS	WS	WS	WS	WS
22	SAURASHTRA & KUTCH	FWS	WS	WS	WS	WS	WS	WS
23	KONKAN & GOA	WS	WS	WS	WS	WS	WS	WS
24	MADHYA MAHARASHTRA	FWS	FWS	WS	WS	FWS	FWS	SCT
25	MARATHWADA	WS	FWS	WS	WS	FWS	SCT	SCT
26	VIDARBHA	WS	WS	WS	WS	WS	FWS	FWS
27	CHHATTISGARH	FWS	FWS	WS	WS	WS	WS	WS
28	COASTAL ANDHRA PRADESH	FWS	FWS	FWS	FWS	SCT	SCT	ISOL
29	TELANGANA	WS	WS	WS	WS	FWS	FWS	FWS
30	RAYALASEEMA	FWS	FWS	FWS	SCT	ISOL	ISOL	ISOL
31	TAMILNADU & PUDUCHERRY	ISOL	ISOL	ISOL	ISOL	ISOL	ISOL	SCT
32	COSTAL KARNATAKA	WS	WS	WS	WS	WS	WS	WS
33	NORTH INTERIOR KARNATAKA	WS	WS	WS	WS	FWS	SCT	SCT
34	SOUTH INTERIOR KARNATAKA	FWS	FWS	WS	WS	FWS	SCT	SCT
35	KERALA AND MAHE	WS	WS	WS	WS	WS	FWS	FWS
36	LAKSHADWEEP	WS	WS	WS	FWS	FWS	FWS	FWS

- As the lead period increases forecast accuracy decrease.





- Action may be taken based on ORANGE AND REDCOLOUR warnings.
- Vulnerable regions likely urban and hilly areas action may be initiated for heavy rainfall warning.
- As the lead period increases forecast accuracy decreases.

Detailed districtwise Multi Hazard weather warning for next five days available at <https://mausam.imd.gov.in/responsive/districtWiseWarningGIS.php>

Weather forecast over Delhi/NCR during 16thAugust to 19thAugust 2025**Past Weather:**

There has been no large change in minimum temperatures and appreciable rise in maximum temperatures by 1-4°C in past 24 hours over Delhi. The minimum temperatures are in the range of 23-27°C and maximum temperatures were in the range of 29-31°C. The minimum temperatures are below normal by 1-3°C and maximum temperatures were appreciable below normal by 2-4°C over Delhi. South Easterly winds prevailed with wind speed upto 12 kmph in past 24 hours over Delhi. Maximum rainfall of 54.0 mm has been recorded at Mayur Vihar during the past 24 hrs over Delhi. Generally cloudy sky conditions with a wind speed of upto 10-15 kmph from the southeast direction prevailed over the region in the forenoon today.

Weather Forecast:

16.08.2025: Generally cloudy sky. Possibility of one or two spells of very light to light rain/thunderstorm at many places and moderate rain at isolated places during afternoon/evening. Another spell of light rain likely towards night/early hours. The maximum temperatures over Delhi are likely to be in the range of 32 to 34°C. The maximum temperature will be near normal. The predominant surface wind will likely be from the southeast direction with a wind speed of upto 05-10 kmph during the afternoon hours. The wind speed will be upto 5-10 kmph from the northeast direction during the evening and night.

17.08.2025: Generally cloudy sky. Generally cloudy sky. Possibility of light rain/thunderstorm. The maximum and minimum temperatures over Delhi are likely to be in the range of 32 to 34°C and 23 to 25°C respectively. The maximum temperature will be near normal and the minimum temperature will be below normal upto 2 to 3°C. The predominant surface wind will likely to be from the southeast direction with a wind speed of upto 10-15 kmph during morning hours. The predominant surface wind will likely to be from the southeast direction with a wind speed of 10-15 kmph during afternoon hours. The wind speed will likely to be from east direction with wind speed 10-15 kmph from evening to night.

18.08.2025: Generally cloudy sky. Possibility of very light to light rain/thundershowers. The maximum and minimum temperatures over Delhi are likely to be in the range of 32 to 34°C and 22 to 24°C respectively. The maximum temperature will be near normal and the minimum temperature will be below normal up to 3 to 4°C. The predominant surface wind will likely to be from the east direction with a wind speed of 10-15 kmph during morning hours. The wind speed will be upto 5-10 kmph from southeast direction in the afternoon. The wind speed will be likely to be upto 10-15 kmph from east direction in evening and night.

19.08.2025: Possibility of very light to light rain/thundershowers. The maximum and minimum temperatures over Delhi are likely to be in the range of 33 to 35°C and 23 to 25°C respectively. The maximum temperature will be near normal and the minimum temperature will be below normal up to 1 to 2°C. The predominant surface wind will likely to be from the southeast direction with a wind speed of 10-15 kmph during morning hours. The wind speed will be upto 5-10 kmph from southeast direction in the afternoon. The wind speed will be likely to be upto 10-15 kmph from east direction in evening and night.

Impact & Action Suggested due to

- ❖ **Extremely heavy rainfall** very likely at isolated places over Konkan & Goa; Ghat areas of Madhya Maharashtra during 16th -19th; Gujarat Region on 16th, during 18th-20th; Saurashtra on 19th & 20th; Telangana on 16th & 17th; Coastal Karnataka on 18th & 19th; South Interior Karnataka, West Madhya Pradesh on 18th; south Vidarbha on 16th August.
- ❖ **Very heavy rainfall over** Tamil Nadu on 16th; Telangana, Odisha, south Chhattisgarh on 18th & 19th; Coastal Andhra Pradesh & Yanam, Kerala during 16th-19th; Coastal & South Interior Karnataka, Uttarakhand on 16th & 17th; West Madhya Pradesh on 16th, 17th, 21st & 22nd; East Madhya Pradesh on 21st & 22nd; Vidarbha on 17th; East Rajasthan on 19th, 21st & 22nd August Arunachal Pradesh on 16th, during 19th-21st; Nagaland, Manipur, Mizoram & Tripura, Assam & Meghalaya during 20th-22nd August.

Impact Expected

- Localized Flooding of roads, water logging in low lying areas and closure of underpasses mainly in urban areas of the above region.
- Occasional reduction in visibility due to heavy rainfall.
- Disruption of traffic in major cities due to water logging in roads leading to increased travel time.
- Minor damage to kutcha roads.
- Possibilities of damage to vulnerable structure.
- Localized Landslides/Mudslides/landslips/mudslips/landsinks/mudsinks.
- Damage to horticulture and standing crops in some areas due to inundation.
- It may lead to riverine flooding in some river catchments (for riverine flooding please visit Web page of CWC)

Action Suggested

- Check for traffic congestion on your route before leaving for your destination.
- Follow any traffic advisories that are issued in this regard.
- Avoid going to areas that face the water logging problems often.
- Avoid staying in vulnerable structure.

Agromet advisories for likely impact of Heavy / Heavy to Very Heavy Rainfall

- In **Maharashtra**, make arrangements to drain out excess water from rice fields maintaining 2.5 to 5 cm water level in **Konkan** and *ghat areas* of **Madhya Maharashtra**. In **Marathwada**, harvest matured green gram and keep the harvested produce in safer places. To prevent waterlogging, make provision for draining out excess water from fields of finger millet, turmeric, groundnut, vegetables and fruit orchards in **Konkan**; maize, groundnut, soybean, vegetables and fruit orchards in *ghat areas* of **Madhya Maharashtra**; groundnut, black gram, green gram, soybean, cotton, pigeon pea, pearl millet, turmeric, sugarcane, vegetables and fruit orchards in **Marathwada**; soybean and cotton in **West Vidarbha** and rice, soybean, cotton, pigeon pea, vegetables and fruit orchards in **East Vidarbha**.
- In **Gujarat**, make arrangements to drain out excess water from fields of rice, sugarcane, vegetables and tuber crops in **South Gujarat Heavy Rainfall Zone**; rice, cotton, sugarcane and pigeon pea in **South Gujarat Zone**; groundnut, cotton, soybean, black gram, green gram, sesame and pigeon pea in **South Sourashtra Zone**; groundnut, cotton and sesame in **North Sourashtra Zone** and rice, cotton, green gram, black gram, pigeon pea, pearl millet and vegetables in **Bhal and Coastal Zone**.
- In **Madhya Pradesh**, provide adequate drainage in fields of maize, soybean, cotton and vegetables in **Satpura Plateau Zone**; soybean, maize and vegetables in **Malwa Plateau Zone**; rice, soybean, maize, sugarcane and vegetables in **Central Narmada Valley Zone**; soybean, pigeon pea, cotton and vegetables in **Nimar Valley Zone** and maize, soybean, black gram, cotton, and pigeon pea in **Vindhyan Plateau Zone**.
- In **Chhattisgarh**, make arrangements to drain out excess water from fields of *kharif* maize, rice, minor millets, pulses and vegetables in **Bastar Plateau Zone**.
- In **Telangana**, drain out excess water from fields of rice, cotton, maize, soybean, pigeon pea, turmeric and vegetables in **Northern Telangana Zone** and rice, cotton, soybean, vegetables and vegetable nurseries in **Southern Telangana Zone**.
- In **Andhra Pradesh**, make arrangements to drain out excess water from fields of maize, cotton, sugarcane, rice, mesta, red gram, green gram, black gram and groundnut in **North Coastal Zone** and rice, maize and vegetable fields in **High Altitude Tribal Zone**.
- In **Karnataka**, provide adequate drainage facilities in rice fields and plantations of arecanut and banana in **Coastal Zone**; fields of rice, maize, cotton, ginger and plantations of arecanut in **Hill Zone** and fields of rice, maize and plantations of arecanut and coconut in **Southern Transition Zone**.
- In **Kerala**, provide adequate drainage in fields of rice, coconut, banana and ginger. Provide support to banana plantations. Make the vegetable pandals stronger.
- In **Uttarakhand**, maintain proper drainage channels in fields of green gram, black gram, sugarcane, groundnut, sesame and vegetables in **Bhabar and Tarai Zone** and soybean, maize, pulses, finger millet, ginger, vegetable fields and fruit orchards in **Hill Zone**. In **Sub Humid Sub Tropic Zone**, postpone sowing of green gram till cessation of heavy rains. Ensure drainage of excess water from fields of barnyard millet, finger millet and already sown green gram.

Livestock / Fishery

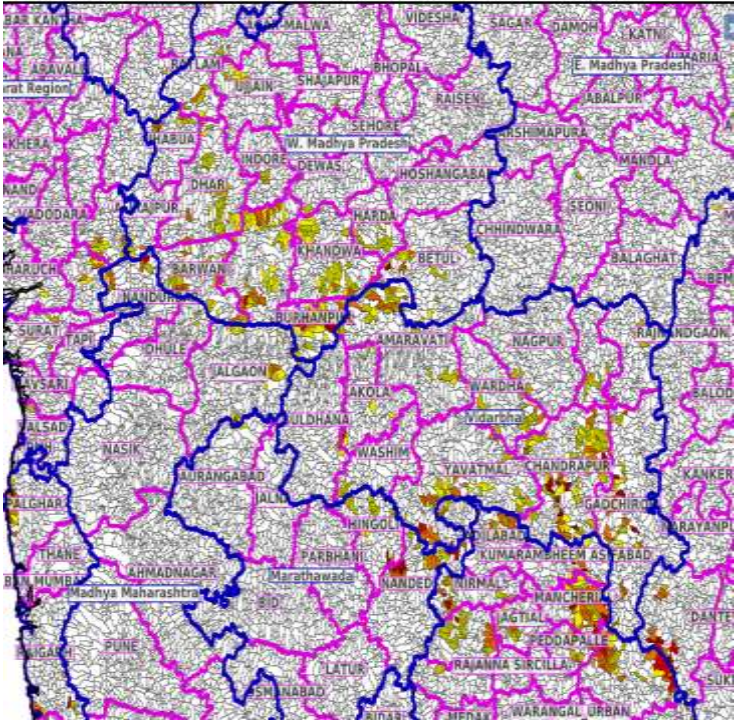
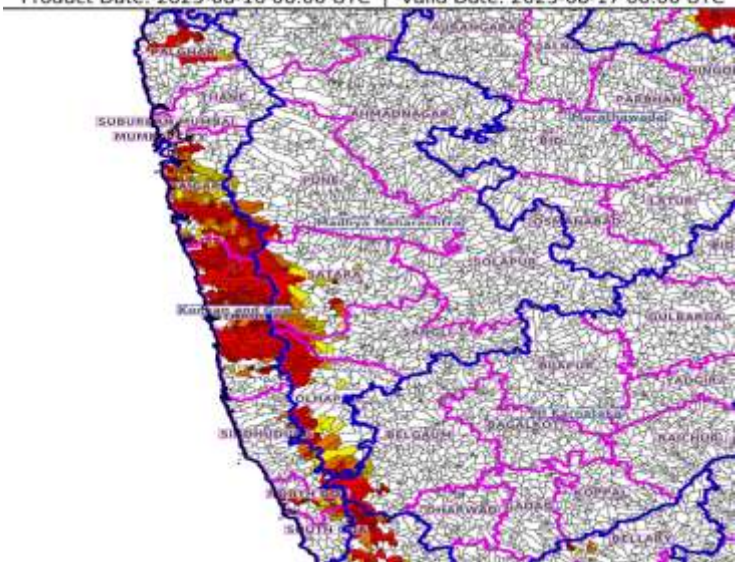
- Keep the animals inside the shed during heavy rainfall and provide them balanced feed.
- Store feed and fodder in a safe place to prevent spoilage.
- Construct an outlet with proper netting around the ponds to drain out excess water, thereby preventing fish from escaping in case of overflow.

Agromet advisories for likely impact of Thunderstorm / Gusty Winds / Squally Winds

(Based on the IBF and advisories issued by different AMFUs)

- Provide mechanical support to horticultural crops and staking or support to vegetables and young fruit plants / fruit-bearing plants to avoid lodging due to strong winds.

Flash flood guidance:

<p>24 hours Outlook for the Flash Flood Risk (FFR) till 1130 IST of 17-08-2025 :</p> <p>Low to Moderate flash flood risk likely over few watersheds & neighbourhoods of following Met Sub-divisions during next 24 hours.</p> <p>Telangana - Adilabad, J. Bhupalpally, Jagtial, Kamareddy, Kumaram Bheem, Mancherial, Nirmal, Nizamabad and Peddapalle districts.</p> <p>Vidarbha - Akola, Amaravati, Bhandara, Buldhana, Chandrapur, Gadchiroli, Gondiya, Nagpur, Wardha, Washim and Yavatmal districts.</p> <p>West Madhya Pradesh - Alirajpur, Barwani, Betul, Burhanpur, Dhar, Harda, Indore, Jhabua, Khandwa, Khargone, Ratlam and Ujjain districts.</p> <p>Gujarat Region - Bharuch, Chhota Udepur, Narmada, Navsari, Surat and Valsad districts.</p> <p>Madhya Maharashtra - Dhule, Jalgaon and Nandurbar districts.</p> <p>Marathawada - Hingoli and Nanded districts.</p> <p>Surface runoff/ Inundation may occur at some fully saturated soils & low-lying areas over Area of Concern (AoC) as shown in map due to expected rainfall occurrence in next 24 hours.</p>	<p>Product: WRF FFR Timescale: 24-hr Region: "REGIONAL"</p> <p>Product Date: 2025-08-16 06:00 UTC Valid Date: 2025-08-17 06:00 UTC</p> 
<p>24 hours Outlook for the Flash Flood Risk (FFR) till 1130 IST of 17-08-2025 :</p> <p>Moderate to High flash flood risk likely over few watersheds & neighbourhoods of following Met Sub-divisions during next 24 hours.</p> <p>Konkan & Goa - North Goa, South Goa, Mumbai City, Palghar, Raigarh, Ratnagiri, Sindhudurg and Suburban Mumbai districts.</p> <p>Surface runoff/ Inundation may occur at some fully saturated soils & low-lying areas over Area of Concern (AoC) as shown in map due to expected rainfall occurrence in next 24 hours.</p>	<p>Product: NCUM FFR Timescale: 24-hr Region: "INDIA"</p> <p>Product Date: 2025-08-16 06:00 UTC Valid Date: 2025-08-17 06:00 UTC</p> 

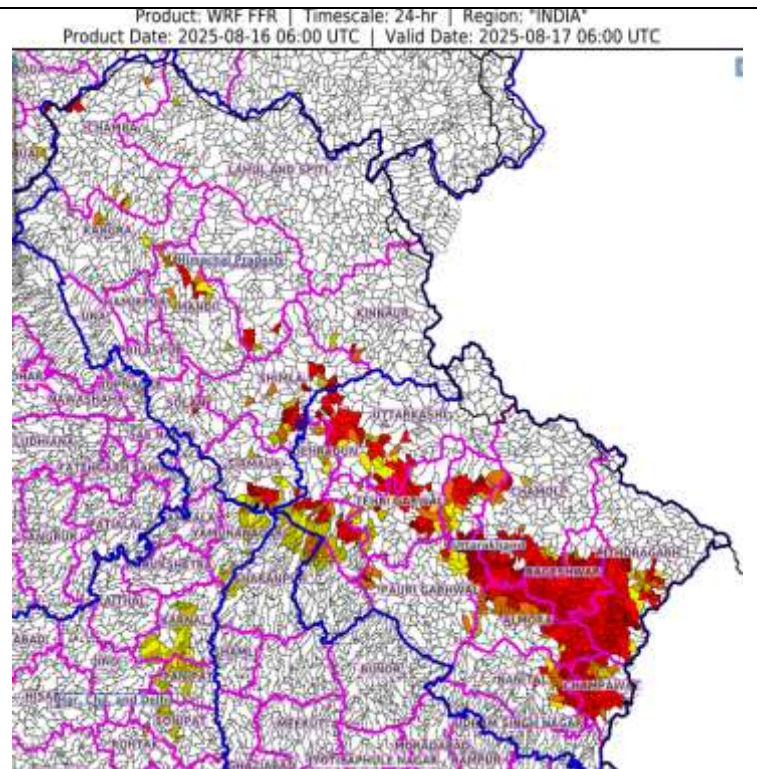
24 hours Outlook for the Flash Flood Risk (FFR) till 1130 IST of 17-08-2025 :

Low to Moderate flash flood risk likely over few watersheds & neighbourhoods of following Met Sub-divisions during next 24 hours.

Himachal Pradesh - Chamba, Kangra, Kullu, Mandi, Shimla, Sirmaur and Solan districts.

Uttarakhand - Almora, Bageshwar, Chamoli, Champawat, Dehradun, Haridwar, Nanital, Pauri Garhwal, Pithoragarh, Rudraprayag, Tehri Garwal and Uttarkashi districts.

Surface runoff/ Inundation may occur at some fully saturated soils & low-lying areas over Area of Concern (AoC) as shown in map due to expected rainfall occurrence in next 24 hours.



Legends & abbreviations:

- ❖ **Heavy Rain:**64.5-115.5mm; **Very Heavy Rain:**115.6-204.4mm; **Extremely Heavy Rain:** >204.4mm.
- ❖ **Obsy:** Observatory; Automatic Weather Station; **ARG:** Automatic Rain Gauge; **dist:** District: **NH:** National Highway; **KVK:** Krishi Vigyan Kendra; **DVC:** Damodar Valley Corporation; **PTO:** Part Time Office, **Aero:** Aerodrome, **IAF:** Indian Air Force.
- ❖ **Region wise classification of meteorological Sub-Divisions:**
 - **Northwest India:** Western Himalayan Region (Jammu-Kashmir-Ladakh-Gilgit-Baltistan-Muzaffarabad, Himachal Pradesh and Uttarakhand); Punjab, Haryana-Chandigarh-Delhi; West Uttar Pradesh, East Uttar Pradesh, West Rajasthan and East Rajasthan.
 - **Central India:** West Madhya Pradesh, East Madhya Pradesh, Vidarbha and Chhattisgarh.
 - **East India:** Bihar, Jharkhand, Sub-Himalayan West Bengal & Sikkim; Gangetic West Bengal, Odisha and Andaman & Nicobar Islands.
 - **Northeast India:** Arunachal Pradesh, Assam & Meghalaya and Nagaland, Manipur, Mizoram & Tripura.
 - **West India:** Gujarat Region, Saurashtra & Kutch, Konkan & Goa, Madhya Maharashtra and Marathawada.
 - **South India:** Coastal Andhra Pradesh & Yanam, Telangana, Rayalaseema, Coastal Karnataka, North Interior Karnataka, South Interior Karnataka, Kerala & Mahe, Tamil Nadu, Puducherry & Karaikal and Lakshadweep.

LEGENDS

1. अंडमान और निकोबार द्वीपसमूह

2. अरुणाचल प्रदेश

3. असम और मेघालय

4. नागालैंड, मणिपुर, मिजोरम और त्रिपुरा

5. उप-हिमालयी पश्चिम बंगाल और सिक्किम

6. गंगीय पश्चिम बंगाल

7. ओडिशा

8. झारखंड

9. बिहार

10. पूर्वी उत्तर प्रदेश

11. पश्चिम उत्तर प्रदेश

12. उत्तराखंड

13. हरियाणा, चंडीगढ़ और दिल्ली

14. पंजाब

15. हिमाचल प्रदेश

16. जम्मू और कश्मीर और लद्दाख

17. पश्चिम राजस्थान

18. पूर्वी राजस्थान

19. पश्चिम मध्य प्रदेश

20. पूर्वी मध्य प्रदेश

21. गुजरात

22. सौराष्ट्र

23. कोंकण और गोवा

24. मध्य महाराष्ट्र

25. मराठवाड़ा

26. विदर्भ

27. छत्तीसगढ़

28. तटीय आंध्र प्रदेश और यनम

29. तेलंगाना

30. रायलसीमा

31. तमिलनाडु, पुडुचेरी और कराईकल

32. तटीय कर्नाटक

33. आंतरिक उत्तरी कर्नाटक

34. आंतरिक दक्षिणी कर्नाटक

35. केरल और माहे

36. लक्षद्वीप



1. Andaman & Nicobar Islands

2. Arunachal Pradesh

3. Assam & Meghalaya

4. Nagaland, Manipur, Mizoram & Tripura

5. Sub-Himalayan West Bengal & Sikkim

6. Gangetic West Bengal

7. Odisha

8. Jharkhand

9. Bihar

10. East Uttar Pradesh

11. West Uttar Pradesh

12. Uttarakhand

13. Haryana, Chandigarh & Delhi

14. Punjab

15. Himachal Pradesh

16. Jammu & Kashmir and Ladakh

17. West Rajasthan

18. East Rajasthan

19. West Madhya Pradesh

20. East Madhya Pradesh

21. Gujarat

22. Saurashtra

23. Konkan & Goa

24. Madhya Maharashtra

25. Marathwada

26. Vidarbha

27. Chhattisgarh

28. Coastal Andhra Pradesh & Yanam

29. Telangana

30. Rayalaseema

31. Tamilnadu, Puducherry & Karaikal

32. Coastal Karnataka

33. North Interior Karnataka

34. South Interior Karnataka

35. Kerala & Mahe

36. Lakshadweep

SPATIAL DISTRIBUTION (% of Stations reporting)

% Stations	Category	% Stations	Category
76-100	Widespread (WS/Most Places)	26-50	Scattered (SCT/A Few Places)
51-75	Fairly Widespread (FWS/Many Places)	1-25	Isolated (ISOL)



Fog



Heavy Snow



Cold Wave



Heavy Rain



Dust Storm



Cold Day



Very Heavy Rain



Heat Wave



Ground Frost



Extremely Heavy Rain



Warm Night



Thunder & Lightning



Hot Day



Hailstorm



Hot & Humid



Dust Raising Winds



Strong Surface Winds

COLOUR CODED WARNING

No Warning (No Action)

Watch (Be Aware)

Alert (Be Prepared To Take Action)

Warning (Take Action)

Probabilistic Forecast

Terms	Probability of Occurrence (%)
Unlikely	< 25
Likely	25 - 50
Very Likely	50 - 75
Most Likely	> 75

* Red colour warning does not mean "Red Alert", Red colour warning means "Take Action".

Forecast and Warning for any day is valid from 0830 hours IST of day till 0830 hours IST of next day.

For more details, kindly visit <https://mausam.imd.gov.in> or contact: 011-2434-4599

(Service to the Nation since 1875)

DEFINITION/CRITERIA

Rain/ Snow *

Heavy: 64.5 to 115.5 mm/cm *
Very Heavy: 115.6 to 204.4 mm/cm *
Extremely Heavy: > 204.4 mm/cm *

Heat Wave

When maximum temperature of a station reaches $\geq 40^{\circ}\text{C}$ for plains and $\geq 30^{\circ}\text{C}$ for hilly regions
(a) Based on Departure from normal

Heat Wave: Maximum Temperature Departure from normal 4.5°C to 6.4°C .

Severe Heat Wave: Maximum Temperature Departure from normal $\geq 6.5^{\circ}\text{C}$

(b). Based on Actual maximum temperature

Heat Wave: When actual maximum temperature $\geq 45^{\circ}\text{C}$.

Severe Heat Wave: When actual maximum temperature $\geq 47^{\circ}\text{C}$.

(c). Criteria for heat wave for coastal stations

When maximum temperature departure is $> 4.5^{\circ}\text{C}$ from normal. Heat Wave may be described provided maximum temperature $\geq 37^{\circ}\text{C}$.

Warm Night

When maximum temperature remains 40°C

Warm Night: When minimum temperature departure 4.5°C to 6.4°C .

Severe Warm Night: When minimum temperature departure $> 6.4^{\circ}\text{C}$.

Cold Wave

When minimum temperature of a station $\leq 10^{\circ}\text{C}$ for plains and $\leq 0^{\circ}\text{C}$ for hilly regions.

(a). Based on departure

Cold Wave: Minimum Temperature Departure from normal -4.5°C to -6.4°C .

Severe Cold Wave: Minimum Temperature Departure from normal $\leq -6.5^{\circ}\text{C}$

(b) Based on actual Minimum Temperature (for Plains only)

Cold Wave: When Minimum Temperature is $\leq 4.0^{\circ}\text{C}$

Severe Cold Wave: When Minimum Temperature is $\leq 2.0^{\circ}\text{C}$

(c) For Coastal Stations

When Minimum Temperature departure is $\leq -4.5^{\circ}\text{C}$ & actual Minimum Temperature is $\leq 15^{\circ}\text{C}$

Cold Day

When minimum temperature of a station $\leq 10^{\circ}\text{C}$ for plains and $\leq 0^{\circ}\text{C}$ for hilly regions

Based on departure

Cold Day: Maximum Temperature Departure from normal -4.5°C to -6.4°C .

Severe Cold Day: Maximum Temperature Departure from normal $\leq -6.5^{\circ}\text{C}$

Fog

Phenomenon of small droplets suspended in air and the horizontal visibility $< 1\text{km}$

Moderate Fog: When the visibility between 500-200 metres

Dense Fog: when the visibility between 50- 200 metres

Very Dense Fog: when the visibility < 50 metres

Thunderstorm

Sudden electrical discharges manifested by a flash of light (Lightning) and a sharp rumbling sound (thunder)

Dust/Sand Storm

An ensemble of particles of dust or sand energetically lifted to great heights by a strong and turbulent wind.

Frost

Ice deposits on ground

Air temperature $\leq 4^{\circ}\text{C}$ (over Plains)

Squall

A strong wind that rises suddenly, lasts for atleast 1 minute.

Moderate: Wind speed 52-61 kmph

Severe: Wind speed 62-67 kmph

Very Severe: Wind speed > 67 kmph

Sea State

Effect of various waves in the sea over specific area

Rough to very rough: Wind speed 41-62 kmph (22-33 knots) & Wave height 2.5-6 metre

High to very high: Wind speed 63-117 kmph (34-63 knots) & Wave height 6-14 metre

Phenomenal: Wind speed > 117 kmph (> 63 knots) & Wave height > 14 metre

Cyclone

Cyclonic Storm: Wind speed 62-87 kmph (34-47 knots)

Severe Cyclonic Storm: Wind speed 88-117 kmph (48-63 knots)

Very Severe Cyclonic Storm: Wind speed 118-165 kmph (64 - 89 knots)

Extremely Severe Cyclonic Storm: Wind speed 166-220 kmph (90 -119 knots)

Super Cyclone Storm: Wind speed > 220 kmph (> 119 knots)

* Red colour warning does not mean "Red Alert", Red colour warning means "Take Action".

Forecast and Warning for any day is valid from 0830 hours IST of day till 0830 hours IST of next day.

For more details, kindly visit <https://mausam.imd.gov.in> or contact: 011-2434-4599

(Service to the Nation since 1875)

Hot and Humid: When maximum temperatures remain 3°C above normal along with the above normal relative humidity.